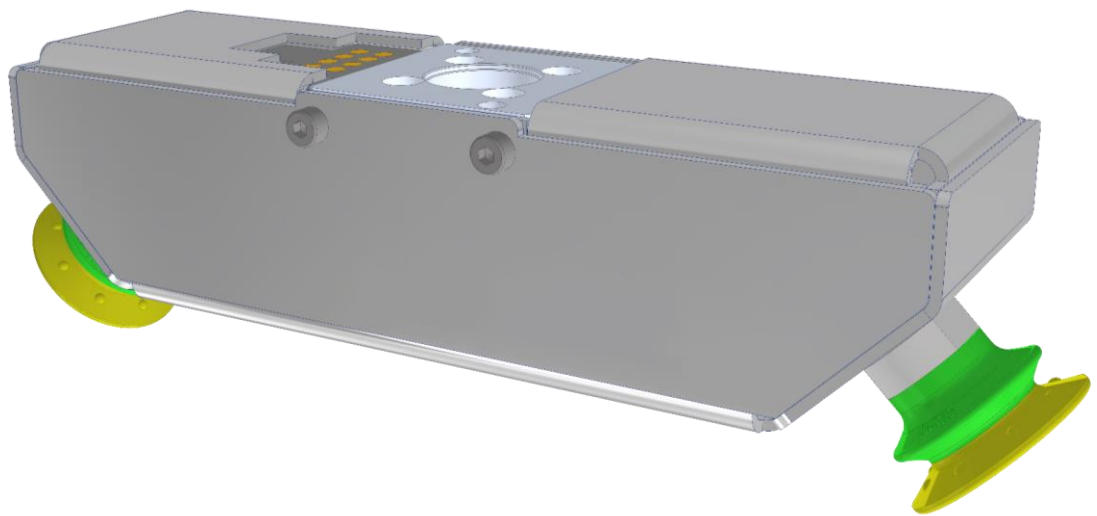




Double Vacuum Picker

011038

Flexible, efficient, compact, secure



011038 Highlights

- | |
|--|
| <ul style="list-style-type: none"> • Double pickers for maximum machine tending efficiency |
| <ul style="list-style-type: none"> • 2 Separately controlled Double bellow DURAFLEX vacuum cups with secure vacuum grip on most any surfaces. |
| <ul style="list-style-type: none"> • 2 Separately controlled, flow efficient vacuum ejectors with patented cartridge technology. Vacuum flow of low 0,01 NI/s at 0,6MPa feed pressure and 70 -kPa vacuum level. |
| <ul style="list-style-type: none"> • 2 pcs of 30 -kPa vacuum switch for picking confirmation of each vacuum picker. |
| <ul style="list-style-type: none"> • Collobro Instant Tool Changer ITC-W10P4E8-T (Payload 10kg, Pneumatic x4, Electric x8, Tool side) |

"Collobro – A simple choice"