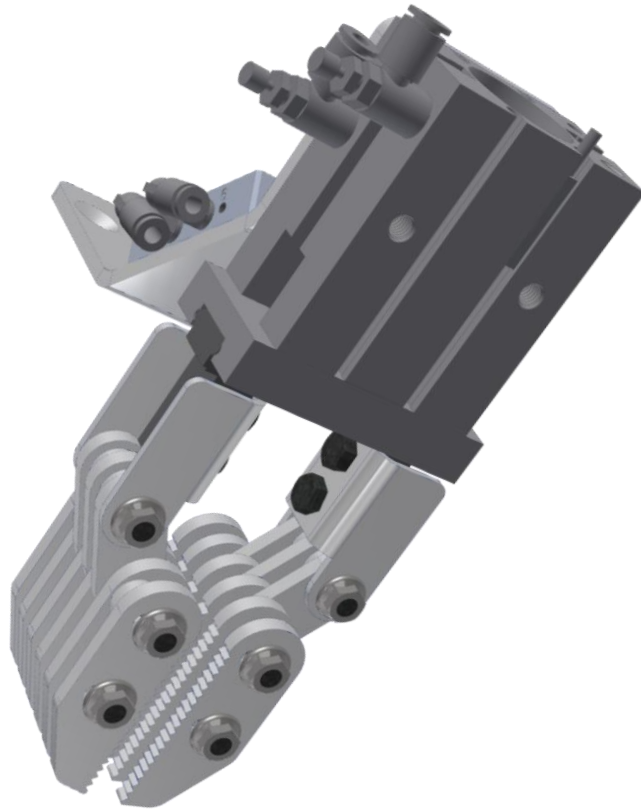




Single Gripper

011830

Adjustable fingers
for maximum
flexibility



011830 Highlights

<ul style="list-style-type: none"> • Pneumatic* gripper - Quick, Secure and Simple set up.
<ul style="list-style-type: none"> • Collobro Instant Tool Attachment ITA-W10P4E0-T (Payload 10kg, Pneumatic x4, Electric x0*, Tool side)
<ul style="list-style-type: none"> • Gripper for flexible machine tending ability.
<ul style="list-style-type: none"> • Quick, flexible finger adjustment for round, flat, symmetric or assymmetric gripping form.
<ul style="list-style-type: none"> • Quick, flexible gap adjustment from 0 – 75** mm.
<ul style="list-style-type: none"> • Adjustable, flexible gripping width 4 - 44**mm.
<ul style="list-style-type: none"> • Reversible, flexible fingers for inside gripping.
<ul style="list-style-type: none"> • 14 mm stroke**
<ul style="list-style-type: none"> • Up to 104N** Internal gripping force
<ul style="list-style-type: none"> • Up to 65N** External gripping force
<p>* Pneumatic gripper available with grip confirmation signal in combination with ITC-W10P4E8-T for handling signals.</p>
<p>** Greater span is available on request</p>