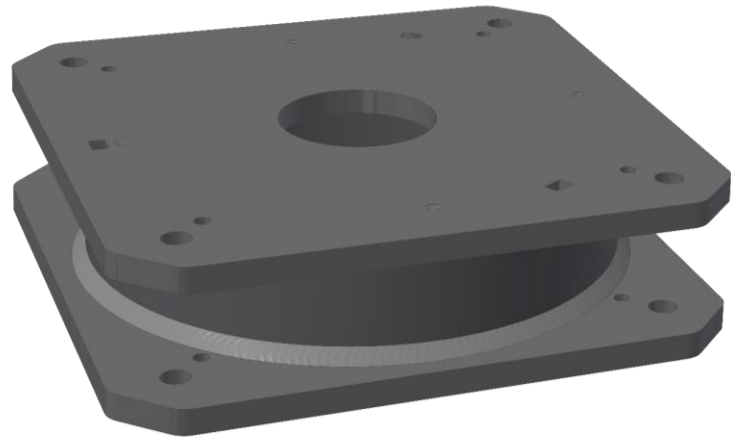




Pillar Low

011398



011398 Highlights

- The lowest pillar in the range with 50 mm height
- Fits in all 3 mounting positions on base Colla H1.0
- Quick, accurate, simple mounting
- The extra pillar distance improves the mobility of robot hoses
- Pillar Low is successfully used together with Collobro Safety Scanner 011396, (adds 91mm)

"Collobro – Simply simple"